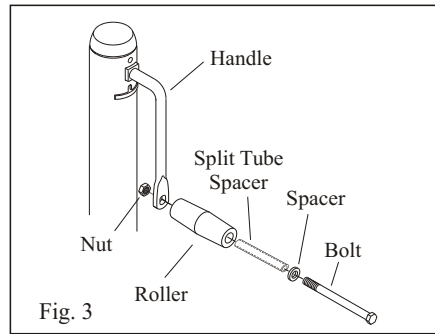


ASSEMBLY INSTRUCTIONS

Handle Assembly - Fig. 3 - Place one spacer over the 3/8" x 4.25" bolt. Lightly grease split tube spacer. Then place the bolt and tube spacer assembly through the split tube spacer. Then place the bolt and spacers through the roller. Insert the bolt through the handle. Install the 3/8" locknut onto the bolt and tighten. Adjust the nut so that the bolt no longer turns freely. A minimum of two full bolt threads must be visibly extended through the nut.

Caster Wheel Assembly - Grease the outside of the wheel spacer, Item #19, using a standard automotive grease, and insert it into the wheel, Item #18. Place the wheel and spacer into the yoke and align the holes in the wheel with the holes in the yoke. Insert the 1/2" x 3" bolt, Item #20, through both sides of the yoke. Make sure the threads of the bolt are to the outside of the yoke when the yoke hangs down in the trailering position. Install the 1/2" locknut, Item #21, and tighten until yoke is just tight enough against the metal spacer to keep the spacer from rotating. Do not over-tighten, this can cause spacer deformation and binding of the wheel. The wheel must still spin freely.

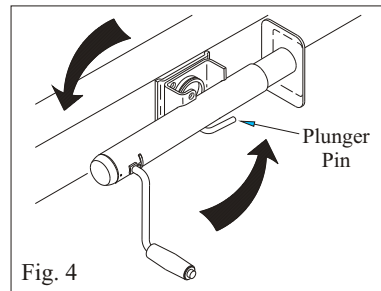


OPERATING INSTRUCTIONS

Rotate the jack handle clockwise to raise, or counter-clockwise to lower the jack. NOTE: If the caster wheel does not have ground contact, it is necessary to keep the caster from rotating when cranking the jack handle.

SWING-AWAY SWIVEL JACK OPERATION

This style jack is designed to be swiveled into a horizontal or storage position (see Fig. 4) In both the vertical and horizontal positions, the plunger must be securely in positioned in the mating hole in the mounting bracket. To place the jack into the horizontal position allow about 2" of ground clearance beneath the footplate or caster wheel. Pull the plunger pin out of the opening and swivel the jack. Rotate either left or right until the plunger pin snaps into the proper mounting bracket hole. NOTE: To avoid damaging the handle while trailering in the horizontal position, secure the handle to the jack with a bungee cord or a rope.

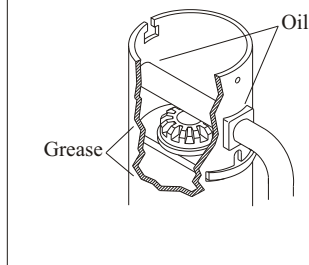


To return jack to the vertical position, pull the plunger pin out of the hole and rotate to the vertical or lifting position. At this point, the jack can be pulled or pushed until the plunger pin snaps into the mating hole in the mounting bracket.

MAINTENANCE

The internal gearing and bearings of the jack must be kept lubricated. Using a needle nose applicator, pump a small amount of automotive grease through the lubrication opening. The lubrication opening can be found on the side of the jack tube, right above the support plate (see Fig. 5). Rotate the jack handle to distribute the grease evenly. Lightly grease the inner tube of the jack using the same type of grease. A light weight oil must be applied to the handle unit at both sides of the tube. The axle bolt and nut assembly of the caster wheel must also be lubricated with the same light weight oil.

Fig. 5



LIMITED THREE YEAR WARRANTY

Warranty. Fulton Performance Products, Inc. ("We") warrants to the original consumer purchaser ("You") that the product will be free from defects in material and workmanship for a period of three years under normal use and service, ordinary wear and tear excepted. If the product does not comply with this warranty, We will replace the product without charge to You and within a reasonable time or, at Fulton's option, refund the purchase price. This warranty is not transferable.

Limitations on the Warranty. The warranty does not cover the following: (a) normal wear and tear; (b) damage through abuse, neglect, misuse, or as a result of any accident or in any other manner; (c) damage from misapplication, overloading, or improperly installed; (d) improper maintenance; (e) a product altered in any manner by anyone other than us.

Obligations of Purchaser. To make a claim, contact us at 50 Indianhead Drive, Mosinee, WI, (715) 693-1700, identify the product, and follow the instructions that will be provided. Any returned product that is replaced or refunded becomes the property of Fulton. You will be responsible for shipping costs to us. Please retain your purchase receipt to verify date of purchase. This must be produced to honor warranty claim.

Remedy Limits. Repair or replacement is the purchaser's sole remedy under this or any other warranty on the product, whether express or implied. We shall not be liable for service or labor charges incurred in removing or replacing a product or any incidental or consequential damages of any kind. We expressly disclaim any implied warranty of merchantability or fitness for particular purpose after the three-year warranty period. Some states do not allow the exclusion of incidental or consequential damages or limitation of an implied warranty so the above exclusion and limitation may not apply to you.

Legal Rights. This warranty gives you specific legal rights, and You also may have other rights which vary from state to state. **ANY IMPLIED WARRANTY OF MERCHANTABILITY OR FITNESS FOR A PARTICULAR PURPOSE ON ANY PRODUCT SHALL BE LIMITED TO THREE YEARS FROM THE DATE OF RETAIL PURCHASE BY YOU.** Some states do not allow limitations on how long an implied warranty lasts, so the above limitation may not apply to You.

This warranty is governed by the laws of the United States of America and is void where prohibited.

FULTON
Performance Products, Inc.

50 Indianhead Dr., P.O. Box 8 Mosinee, WI 54455-0008
800/604-9466 715/693-1700 Fax 715/693-1799
www.fultonperformance.com
fulton@fultonperformance.com

F2512 (K-7570) 7/01

FULTON Performance Products

Marine Trailer Jack Owner's Manual

WARNING

Read and understand all instructions before installing and/or using product. NEVER allow anyone unfamiliar with the operating instructions to use this product.

Read and understand all instructions provided by the manufacturer of the product(s) that this jack will be installed on.

Installation of these Fulton jacks must conform to the following mounting instructions only.

Fulton is not responsible for accidents, occurrences, injuries and losses to or of any person or property wherever which arises as a result of Purchaser's alteration, modification, assembly, reassembly or installation of this product.

When cranking jack or coupling trailer, secure trailer from rolling.

These jacks are designed for vertical loading, excessive side forces must be avoided.

Refer to product to obtain rated capacity. If uncertain contact Fulton Performance Products.

These jacks are designed for mounting to square or rectangular trailers only. These jacks are not intended for mounting to trailers with round tongues.

Assure the correct mounting hole pattern is for your trailer tongue size. The gap between the mounting bolts and the trailer tongue is not to exceed 1/16".

In both the vertical and horizontal positions, the plunger must be positioned in the detent hole in the mounting bracket.

When manually moving trailer over rough or unpaved surfaces, crank to lowest practical position to minimize bending stress on jack.

Operator use caution never to position any part of your body under any portion of the jack or the load being supported. Never allow anyone or any bodily parts to be positioned on or under the load being supported. Disregard could cause property damage and/or serious bodily injury.

Inspect snap ring groove and remove any coating or foreign material from the groove before inserting snap ring. Make sure snap ring is properly seated in the groove before each use.

Make certain that the plunger pin is properly locked into the detent hole in the mounting bracket before raising or lowering the trailer tongue. When manually moving trailer over rough or unpaved surfaces, crank to lowest practical position to minimize bending stress on jack.

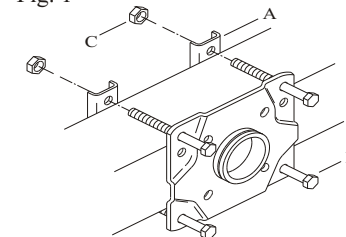
Do not attempt to weld "bolt-on" brackets or straps to the trailer. These items are zinc plated and will emit toxic fumes when welded. Special brackets are available for "weld-on" applications.

Failure to follow these warnings and instructions may result in property damage and/or serious bodily injury.

MOUNTING INSTRUCTIONS

Before mounting your trailer jack, check for interference from recessed ball mounts, trailer coupler, hitch or hitchplates and/or vehicle bumper. Rotate the jack handle to check that the swing is not obstructed. If the jack is of the swing-away or swivel design, check the unit in both vertical and horizontal positions. When the swing-away jack is in the horizontal or storage position, there should not be any interference from structural members of the trailer or trailer coupler. On all jacks check that proper ground clearance has been achieved and will not contact the towing vehicle when in a tight turn. If the jack is not installed correctly, any interference (steep inclines, angled turns etc.) may cause non-repairable damage to the jack and/or trailer. After installation is complete, check that jack operation has not been impaired in any way.

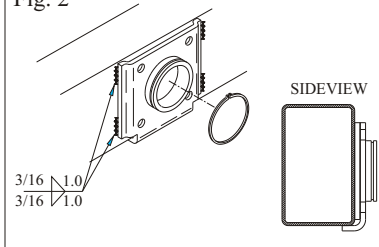
Fig. 1



Bolt-On Mounting Instructions (Fig. 1 - Illustration shown is for a 3" or 4" high trailer frame. If trailer has a 5" frame, mount bracket rotated 90 degrees)

- 1) Place the jack against the trailer tongue and position the mounting straps (A) on the opposite side of the tongue. Place the straps so the flat side is against the tongue. Make sure the holes in the bracket and straps are in line.
- 2) Insert the four bolts (B) through the bracket and straps (two bolts on the top of the tongue and two below the tongue). Position the jack so that the top bolts rest directly on the top of the tongue and the bottom bolts are as close to the tongue as possible. The gap between the mounting bolts and the trailer tongue is not to exceed 1/16".
- 3) Secure with locknuts (C). Torque the nuts to 25 ft-lbs.
- 4) Check for clearance of handle swing, trailer light cables, and coupler clearance.

Fig. 2

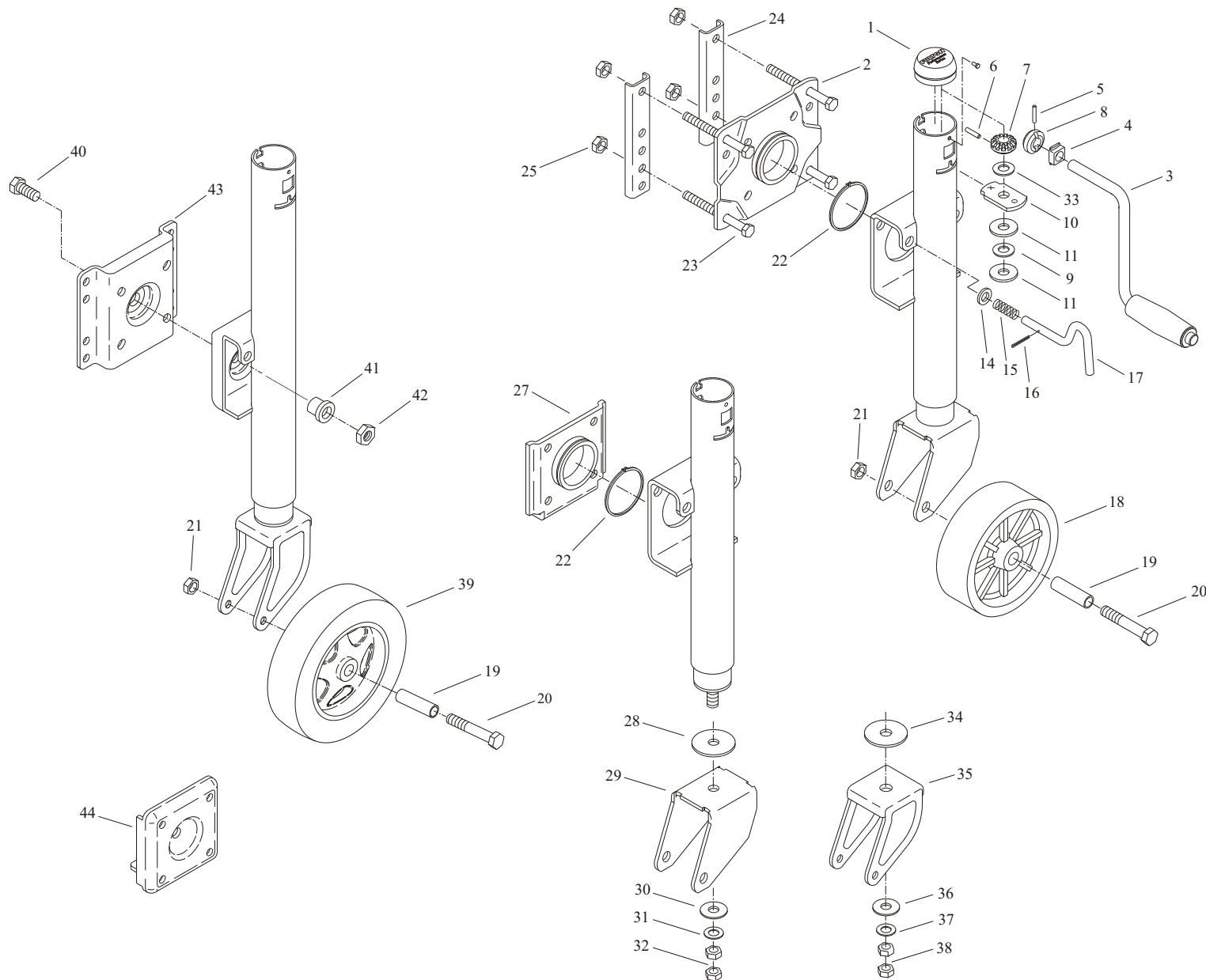


Weld-On Mounting Instructions - Fig. 2 (Bracket shown is a snap ring style. Bolt-thru style will be orientated and welded the same.)

- 1) All welding operations must be performed by an AWS certified welder.
- 2) Place the weld-on mounting plate, Item #27 or #44, against the trailer tongue with the flange locating against the bottom and weld as shown in Fig. 2, using four 1" long, 3/16" fillet welds.
- 3) **Snap Ring Style**- Assemble the jack to the mounting plate by placing the jack over the grooved extruded opening on the mounting plate. Fasten by placing the snap ring into the groove. Make certain that the snap ring is properly seated in the groove.
- 4) **Bolt-thru Style**- Assemble the jack to the mounting plate by placing the jack into the recessed opening on the mounting plate. Insert the bushing, Item #41, through the jack mounting bracket and tighten the locknut, Item #42, until there is no movement in the bushing.
- 5) Check for clearance of handle swing, trailer light cables, and coupler.

SERVICE PARTS AND ACCESSORIES

ITEM	DESCRIPTION	QTY.	PART #	REPAIR KIT	KIT DESCRIPTION
1	CAP - 2" DIA.	(1)	09 175 07		
2	MOUNTING BRACKET	(1)	09 167 02		
3	HANDLE ASSEMBLY - S.W.	(1)	10013	0933301S00	HANDLE KIT - S.W.
4	BUSHING - HANDLE	(1)	09 320 06		
5	GROOVE PIN	(1)	09 380 01		
4	BUSHING - HANDLE	(1)	09 320 06	0933302S00	BEVEL GEAR KIT
5	GROOVE PIN	(1)	09 380 01		
6	DOWEL PIN	(1)	09 380 02		
7	BEVEL GEAR - HORZ.	(1)	09 040 01		
8	BEVEL GEAR - VERT.	(1)	09 040 02		
33	WASHER - .53 I.D. x 1.06	(1)	09 260 15		
9	THRUST WASHER	(1)	178	0933303S00	SUPPORT PLATE KIT
10	SUPPORT PLATE	(1)	09 341 06		
11	WASHER	(2)	180		
33	WASHER - .53 I.D. x 1.06	(1)	09 260 15		
14	WASHER - 3/8	(1)	65	1537S01	PLUNGER PIN KIT
15	SPRING - .53	(1)	8863		
16	COTTER PIN	(1)	288		
17	PLUNGER PIN	(1)	09 640 01		
18	WHEEL - 6"	(1)	09 175 01	6811S00	6" WHEEL KIT
19	SPACER - SPLIT TUBE	(1)	5869		
20	CAPSCREW - 1/2-13 x 3.0 LG.	(1)	38		
21	LOCKNUT - 1/2-13	(1)	09 270 21		
39	WHEEL - 8"	(1)	09 175 10	0933323S00	8" WHEEL KIT
19	SPACER - SPLIT TUBE	(1)	5869		
20	CAPSCREW - 1/2-13 x 3.0 LG.	(1)	38		
21	LOCKNUT - 1/2-13	(1)	09 270 21		
22	SNAP RING - 2.5 DIA.	(1)	9086	P9086	SNAP RING - 2.5 DIA.
23	CAPSCREW - 3/8-16 x 4.0 LG.	(4)	287	09 280 25	MOUNTING HARDWARE BAG
24	MOUNTING STRAPS	(2)	2521		
25	NUT-3/8-16 HEX NYLOK	(4)	05 270 47		
27	WELD-ON BRACKET	(1)	20 510 02	P20510	WELD-ON BRACKET
28	WASHER - NYLON	(1)	09 320 01	0933304S00	IND. CASTER YOKE KIT
29	YOKE - 1/2 HOLE	(1)	10031		1/2" CAPSCREW
30	WASHER	(1)	180		
31	WASHER - THRUST	(1)	6620		
32	LOCKNUT - 1/2-13	(2)	952		
34	WASHER - NYLON	(1)	09 320 08	0933315S00	IND. CASTER YOKE KIT
35	YOKE - 5/8 HOLE	(1)	09 092 05		5/8" CAPSCREW
36	WASHER	(1)	4649		
37	WASHER - THRUST	(1)	04 270 03		
38	LOCKNUT - 5/8-11	(2)	83		
40	CAPSCREW - 1/2-13 x 1.25 LG	(1)	02 270 31	0933325S00	BOLT-THRU MTG KIT
41	BUSHING - 1.125 OD	(1)	09 320 13		
42	LOCKNUT - 1/2-13, ENDLOCK	(1)	09 270 84		
43	BRACKET - BOLT-THRU, 3/8 PIN	(1)	09 167 20		
44	BRKT - BOLT-THRU, 3/8, WELD-ON	(1)	09 562 03		



HOW TO ORDER PARTS

Always replace broken, bent or worn parts before using this product. Use only Fulton Performance Products' parts or parts of equal quality for repair. Replacement parts are available through Fulton Performance Products' Customer Service Dept., 715-693-1700. Please specify product model number, name of parts, and part number.

FULTON
Performance Products, Inc.

50 Indianhead Dr., P.O. Box 8 Mosinee, WI 54455-0008
800/604-9466 715/693-1700 Fax 715/693-1799
www.fultonperformance.com
fulton@fultonperformance.com